

FIELD MEASUREMENT FORM

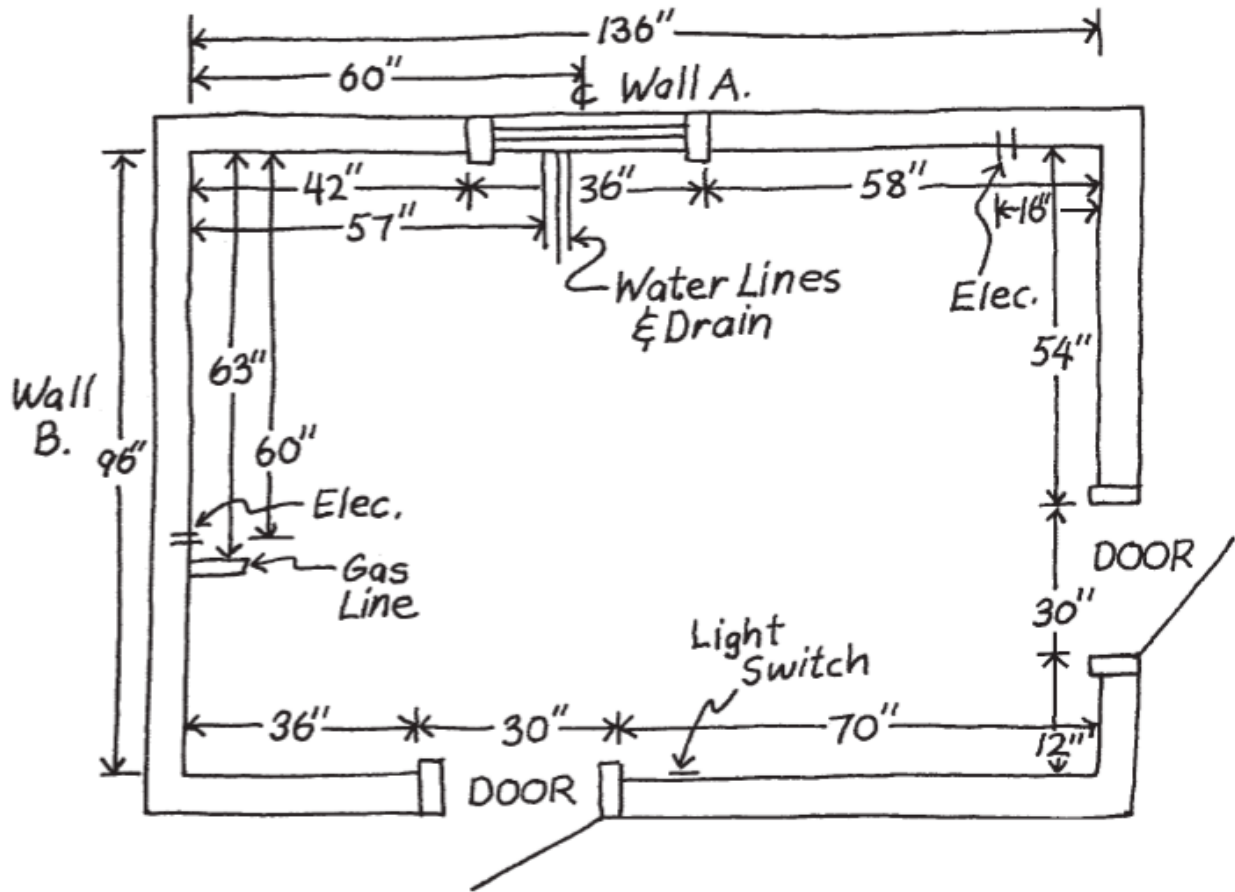
Step 1

Measure Your Space

Accurate measurements as indicated in the measuring procedure are the key elements we will need to Design your kitchen. With this information, our designer will be able to provide accurate drawings for you to visualize your project.

Floor Plan

Before any planning can start we must know the exact dimensions available to work with. Using the measuring procedure illustrated, carefully prepare a simple floor plan of your existing kitchen. Your completed floor plan should resemble the diagram shown below. Make sure you show exact locations of doors, windows, hood vents, exhaust, gas line, water line, drains, switches, outlets, light fixtures, and heat vents. Double check all measurements.



Appliances

Make sure to Indicate the location where you would like the appliances located (refrigerator, stove, cooktop, or wall oven(s), compactor, Wine cooler, microwave, etc..) if the appliance location is approximate please indicate as **MOL** (more or less), otherwise we will assume that the location is fixed and can not be relocated.

If you prefer to leave the appliance location up to our designers please indicate by writing "**Appliance by Designer**" remember before we can do a final revision of your renderings we will need exact appliance specifications. These specification should be provided by your appliance dealer, or can be downloaded from the manufacturers web site providing you have the make and model numbers.

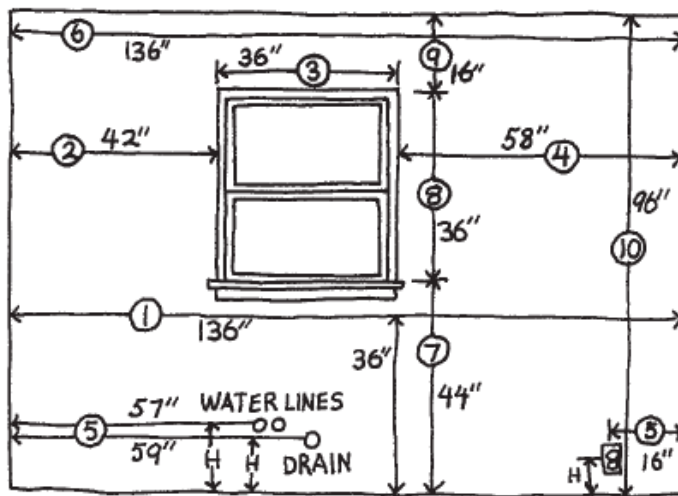
Measuring Side Elevation

Horizontal Measurement

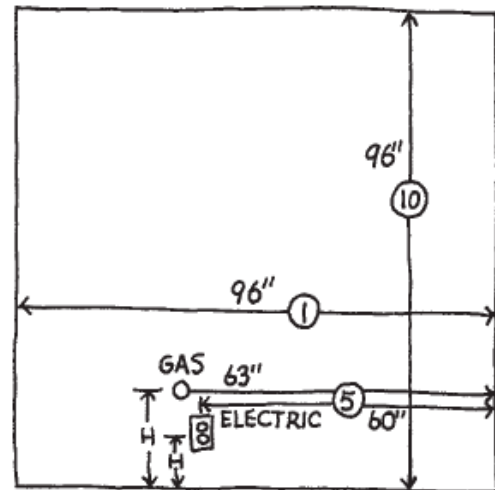
1. Measure from wall to wall at 36" in height from the floor.
2. Measure from corner to window or door opening. If there is face frames please indicate their width
3. Measure across opening from trim edge to trim edge.
4. Measure from edge of trim to far wall. Compare sum of #2, #3 and #4 measurements to **step #1**.
5. Mark exact location of water, drain, gas lines and electrical outlets and switches on drawing.
6. Measure from wall to wall above window and compare to #1.

Vertical Measurement

7. Measure from floor to window sill.
8. Measure from window sill to top of window.
9. Measure from top of window to ceiling.
10. Measure from floor to ceiling – Compare to sum of #7, #8 and #9.



WALL A.



WALL B.

Getting your design

The last step is to fax or e-mail these field measurements along with your *Job Info Sheet* to us. You will receive your design back normally within 48 hours. We strongly recommend you verify measurement against the floor plan you receive from us, it is your responsibility to double check our design measurements against your own. Once you sign off on your drawings you take total responsibility.

Make any changes you need to make and resubmit for revision. You are allowed 2 revisions per drawings with your free design, any more changes after that point will be charged at a flat \$25.00 per submission.

Purchasing

When you decide to order your kitchen you will need to SIGN, DATE and return the following paperwork: 1- Side Elevations, 2- Floor Plan 3-Invoice 4- Appliance specs 5- Credit card Authorization form (unless you elect to use our on line secure payment method.)

All sales are final

You have 24 hours to make changes from the time you place your order, if you order the wrong products returns can only be accepted if the box has not been opened, you will be responsible for shipping and a 20% restock fees SO TRIPLE CHECK EVERYTHING.

cab-net.com Office / Showroom: 3665 East Bay Dr. #212 Largo, FL 33771

Ph: 727-230-9907 Fax: 727-342-7322 E-Mail: Info@cab-net.com

Price Quote / Specification Form

Customer Name:

Shipping Address:

Contact phone:

E-mail Address:

Cab-Net Door	http://cab-net.com/RTA/index.html	Enter your selection by style name and number that you need quoted from our web site
Style Name # 1		
Style Name # 2		

Appliances	Make & Model	Size= width, Height, Depth
Dish Washer		
Range		
Slide In range		
30" Cook top		
36" Cook top		
Refrigerator		
Wine cooler		
Ice Maker		
Compactor		
Other # 1		
Other # 2		

Notes:

Make sure to fax this form along with the field measurement form