



**Direct  
Renovation  
Products**

## KITCHEN MEASUREMENT GUIDE



**Direct Renovation Products (d/b/a Integrated Home Interiors, Inc.)**

**Offices/Design Showroom: 3665 East Bay Drive, #212 Largo, Florida 33771**

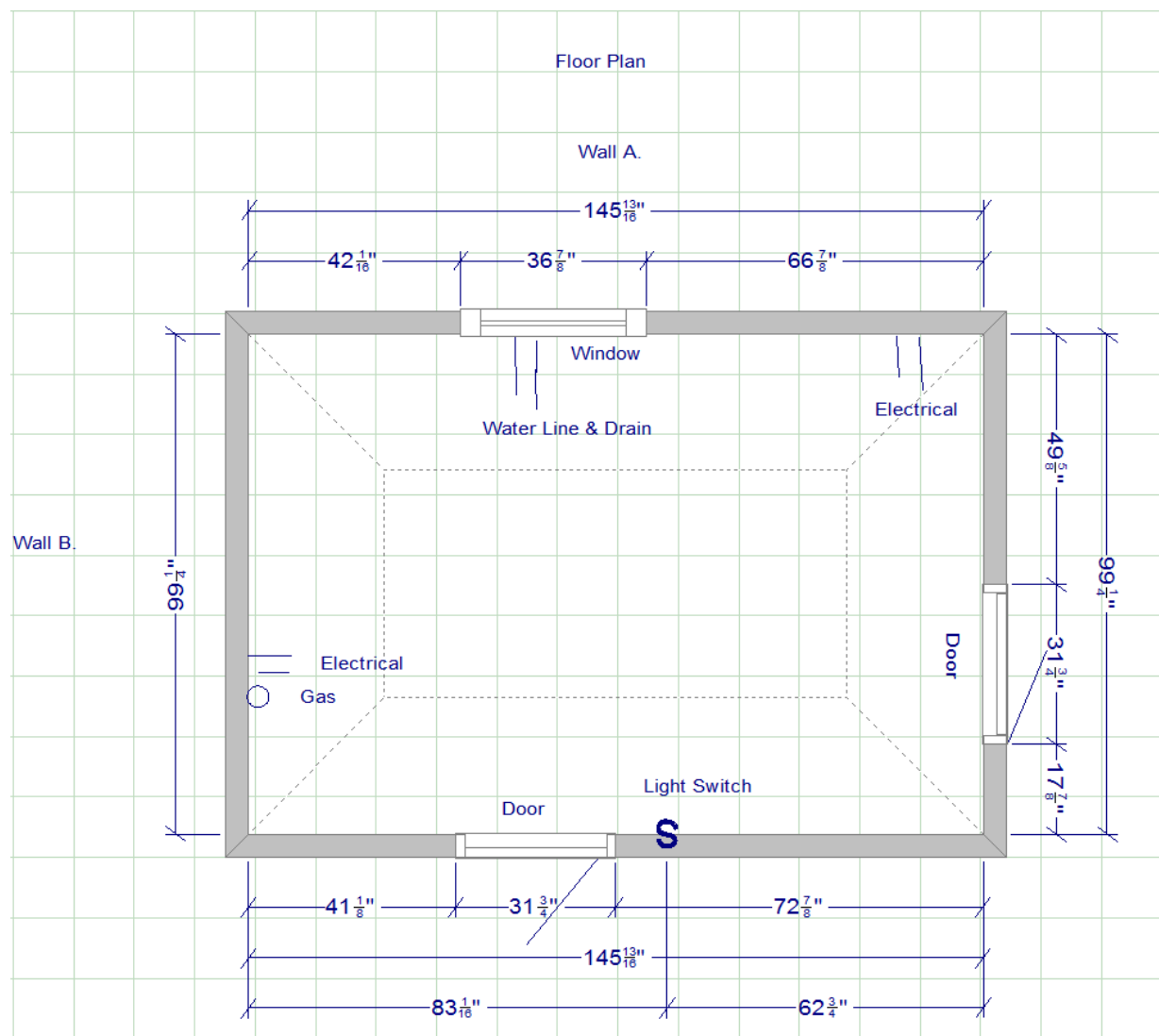
**Telephone: 727-230-9907, [www.cab-net.com](http://www.cab-net.com) and [www.shopdrp.com](http://www.shopdrp.com)**

## KITCHEN MEASUREMENT GUIDELINES

### Measuring Your Space

Accurate measurements as indicated in the measuring procedure section within this guide are the key elements needed to design your “dream kitchen”. With this information, our designers will be able to provide accurate drawings for you to visualize your new kitchen. **PLEASE BE SURE TO USE THE JOB INFORMATION SHEET LOCATED ON PAGE 5 AT THE END OF THIS DOCUMENT** and submit it along with any floor plans, drawings, and appliance specifications when you request your design.

### Floor Plan Example



## Appliances

Make sure to indicate the location where you would like the appliances located (refrigerator, stove, cooktop, or wall oven(s), compactor, wine cooler, microwave or any other such appliance, large or small). If any particular appliance location is approximate please indicate as **MOL** (more or less) on your floor plan, otherwise we will assume that the location is fixed and cannot be relocated.

If you prefer to leave the appliance location up to our designers please indicate by writing “**Appliance by Designer**” on your floor plan. Please remember **before** we can do a final revision of your renderings we will need *exact* appliance specifications. These specifications should be provided by your appliance dealer, or can be downloaded from the manufacturer’s website providing you have the make and model.

## Start of Measuring Procedure

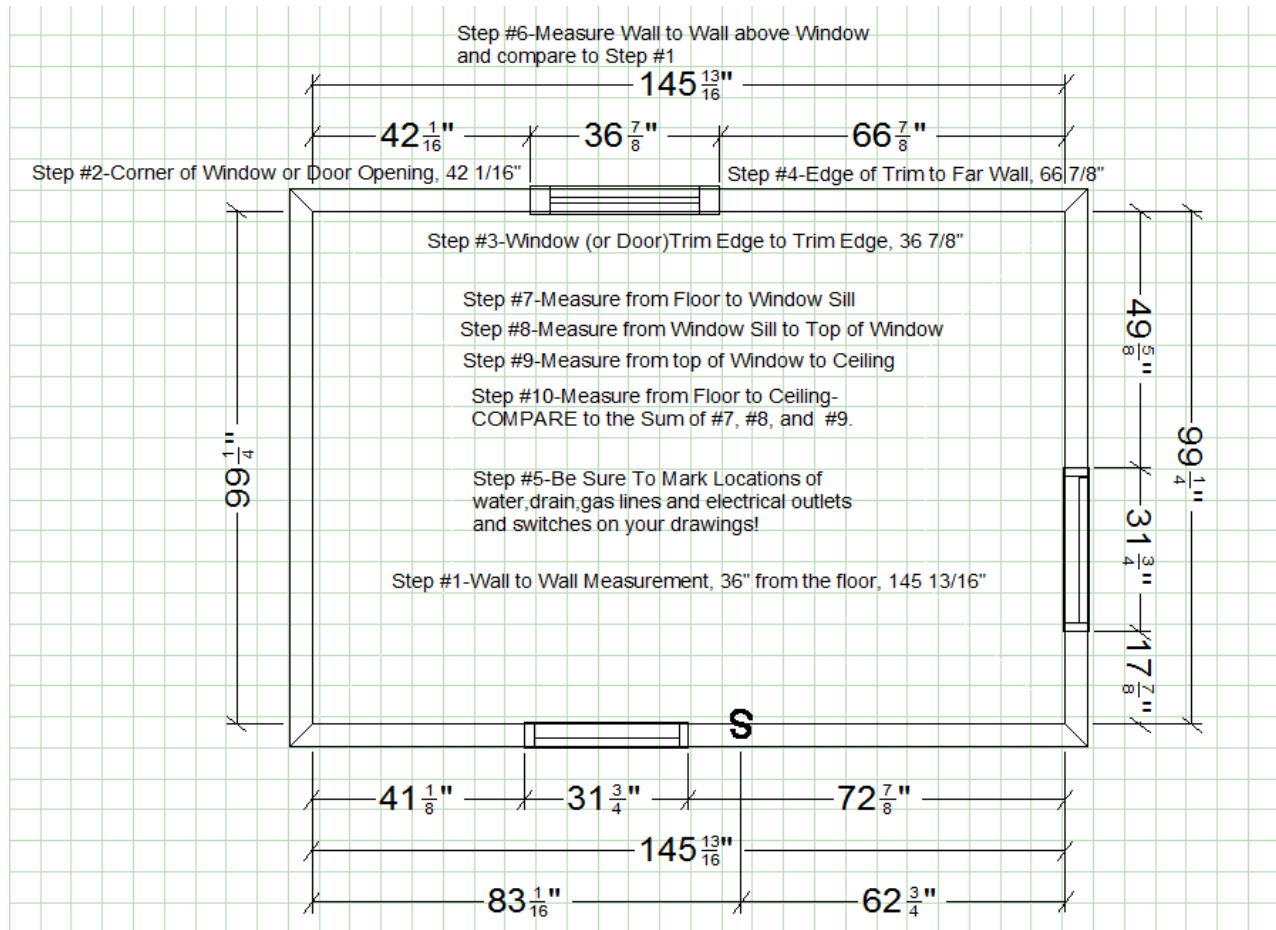
### **Measuring Side Elevation-(Please refer to the labeled floor plan example below)**

- Step #1.** Measure from wall to wall at a 36” height from the floor, record your measurement.
- Step #2.** Measure from corner to window or door opening. If there is a face frame or window trim please indicate the width. Record all measurements.
- Step #3.** Measure across opening from trim edge to trim edge (windows and doors), record your measurement.
- Step #4.** Measure from edge of trim to far wall. Compare sum of #2, #3, and #4 total measurements to **Step #1. Record your confirmation measurement of Step #1.**
- Step #5. Mark exact location of water lines, drain, gas lines, electrical outlets and switches on your floor plan/drawings. All locations should be clearly marked.**
- Step #6.** Measure from wall to wall above window and compare to **Step #1**, record your measurement.

### **Vertical Measurements-(Please also refer to the floor plan example below)**

- Step #7.** Measure from floor to window sill, record your measurement.
- Step #8.** Measure from window sill to top of window and record your measurement.
- Step #9.** Measure from top of window to ceiling and record your measurement.
- Step #10. Measure from floor to ceiling and compare this measurement to the sum of #7, #8, and #9. Record your measurement.**

## Measuring by Steps-Example Floor Plan



## You're Almost There-Getting Your Design!

The last step is to email, fax or send your floor plan with your field measurements and any notes along with our Job Information Sheet (Page 5 of this document) below to [info@cab-net.com](mailto:info@cab-net.com) or [info@shopdrp.com](mailto:info@shopdrp.com). Normally you will receive your design back within 48-72 hours. We strongly recommend you verify your measurements against the floor plan you'll receive from us. It is your responsibility to double check our design measurements against your own.



Once your sign off on the final design we prepare for you, you then take all responsibility and liability for any omissions and errors. We urge you to follow up with our customer service department as soon as possible at 727-230-9907 to ensure your information has been received. In any event, as soon as it is received and reviewed by the assigned designer, you will be contacted for any further information.

***You are typically allowed 2-3 drawing revisions per “free” design, however, at the discretion of your designer their maybe a charge for any revisions thereafter.***

### **Purchasing Your Kitchen Cabinetry**

After you approve and sign your drawings/design for your new kitchen cabinetry, you'll need to SIGN, DATE and return to your designer or customer service the following paperwork:

- Side Elevation Drawings
- Floor Plan
- Appliance Specifications
- Job Information Sheet
- Invoice/Sales Order-Shipping Information
- Full Payment: Credit Card Authorization Form (unless you elect to use our on-line secure payment method) or our PayPal 6 Months No Interest, Same as Cash or other financing methods.

Our designers and customer service department will walk you through the entire process to help ensure the proper documents are received. Once all the proper documentation along with your payment are received, our customer service department will facilitate the ordering of your cabinetry. You will receive an email confirmation typically within 24 hours that will provide an estimate delivery date. You will be notified of any changes throughout the process. Please refer to our Frequently Asked Questions on our website for more information on delivery times and shipping.

If there are any questions, you may call 727-230-9907 during normal working hours or leave a message and our customer service department will get back to you within 24 hours.

### **All Sales Are Final**

You have 24 hours to make changes from the time you place your order. If you order the wrong products, returns can only be accepted if the box has not been opened. You will be responsible for all shipping costs plus a 20% restocking fee. Acceptance of returns is at the sole discretion of Direct Renovation Products. **So please, INSPECT YOUR ORDER SEVERAL TIMES!**

**Thank you!**

4

**Direct Renovation Products (d/b/a Integrated Home Interiors, Inc.)**

**Offices/Design Showroom: 3665 East Bay Drive, #212 Largo, Florida 33771**

**Telephone: 727-230-9907, [www.cab-net.com](http://www.cab-net.com) and [www.shopdrp.com](http://www.shopdrp.com)**



**Job Information Sheet**  
Kitchen and Design Showroom  
3665 East Bay Dr. #212 Largo, FL 33771  
Telephone: 727-230-9907

Contractor/Dealer Name: \_\_\_\_\_  
 Contractor/Dealer Address: \_\_\_\_\_  
 Contractor/Dealer Phone: \_\_\_\_\_  
 Contractor/Dealer Email: \_\_\_\_\_  
 Ship to: \_\_\_\_\_  
 Project: \_\_\_\_\_  
 Dealer Rep: \_\_\_\_\_

What is your budget?     under \$5,000                       \$ 7,500 - \$ 10,000  
                                    \$5,000 - \$ 7,500                       \$ 10,000 - \$ 15,000

What is your timeframe:     ASAP     30 days  
     2 weeks     60 days

Please make sure that all details indicated below are included for an accurate and timely quote.

	Ceiling height
	Window size
	Window location
	Appliance size
	Appliance location
	Plumbing location

	Is assembly needed?
	Warehouse pickup
	Is delivery needed?

Deliveries: Please make sure that a delivery address is included and correct.

Tops	
	Laminate
	Granite
	Quartz
	Solid Surface

	Door name # 1 Selection
	Door name # 2 Selection
	Wood Type
	Paint / Stain
	Glaze

Appliances	Size
Dishwasher	
Standard Range	
Slide In range	
30" Cook top	
36" Cook top	
Refrigerator	
Wine cooler	
Ice Maker	
Compactor	
Sink/Undermount	
Sink drop in	

Design Options	
30" high wall cabinets	<input type="radio"/>
36" high wall cabinets	<input type="radio"/>
42" high wall cabinets	<input type="radio"/>
Staggered cabinets	<input type="radio"/>
1 or 2 drawer banks	<input type="radio"/>
Pots & pans drawers	<input type="radio"/>
Roll out trays	<input type="radio"/>
Spice rack	<input type="radio"/>
Glass ready doors	<input type="radio"/>
Lazy Susan	<input type="radio"/>
5 piece drawer front	<input type="radio"/>
Wine storage	<input type="radio"/>
All plywood construction	<input type="radio"/>
Pull out trash	<input type="radio"/>
Soft close doors	<input type="radio"/>
Double oven cabinet	<input type="radio"/>
Light rail molding	<input type="radio"/>
Solid wood dovetail drawers	<input type="radio"/>
Soft close drawers	<input type="radio"/>
Microwave hood	<input type="radio"/>
Under cabinet lighting	<input type="radio"/>
Small or large crown	<input type="radio"/>
Other	<input type="radio"/>

Note:

Please be advise that not all of the above options are available in all products lines. Please check your price sheets and product specification books or call your designer. Thank You!



Notes/Worksheet